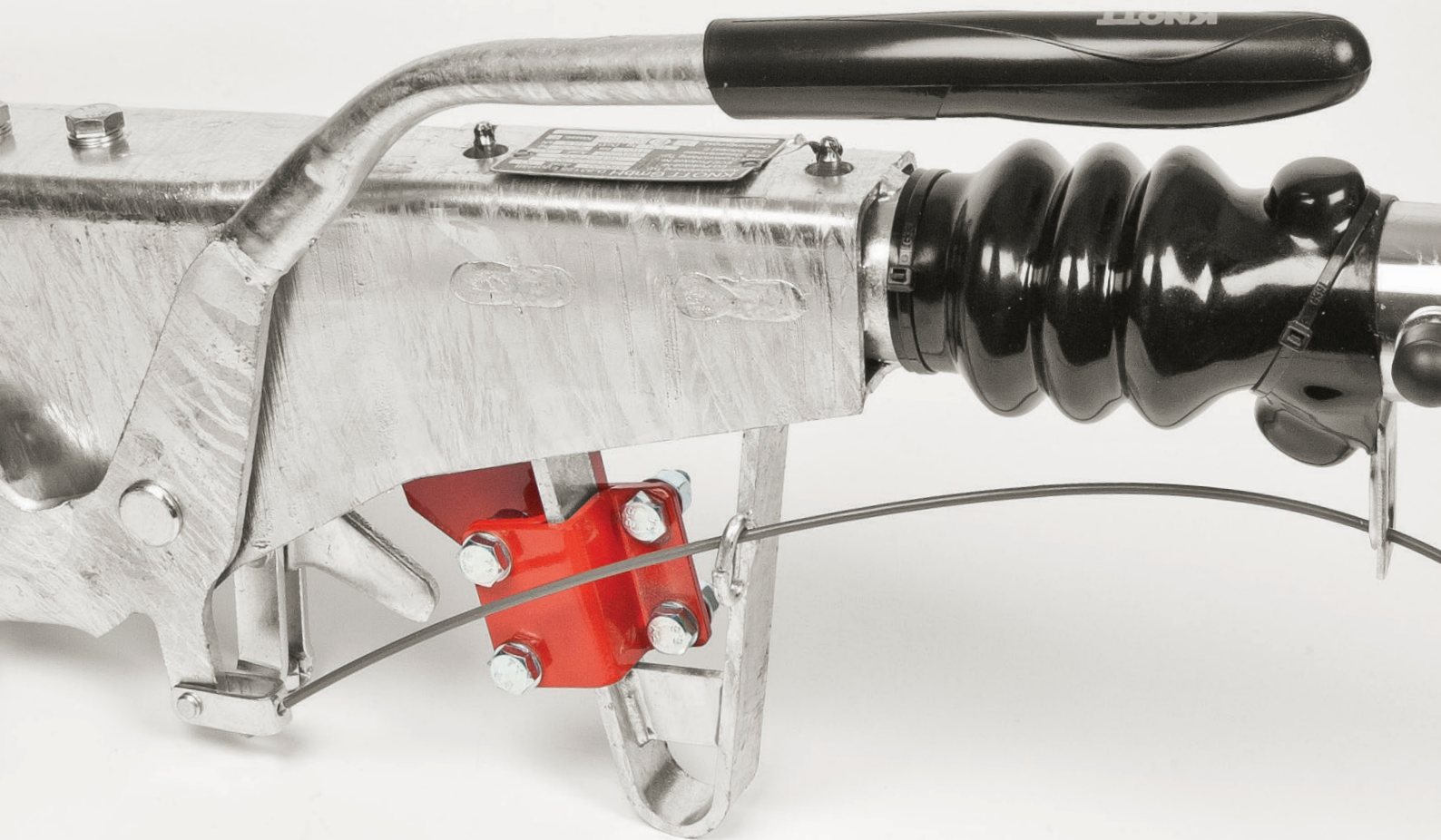


MOBILE UNITS GUIDE



How to fit the
**Handbrake Protection
Skid Strengthening
Bracket**
from **groundhog**



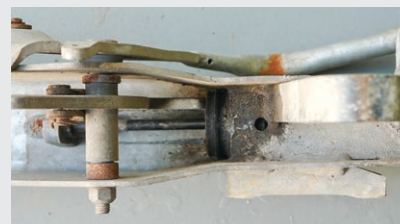
Before you start...

IMPORTANT!

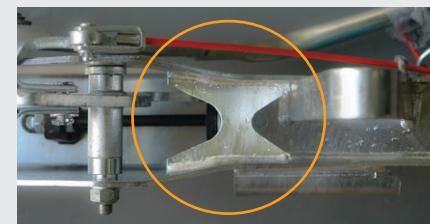
Identify which type of towing coupling is fitted to your Groundhog unit

Before ordering the Handbrake Protection Skid Strengthening Bracket, you will need to determine which towing coupling is fitted to your Groundhog unit. To do this, please reference the information below:

Is there a butterfly-shaped plate welded to the underside of the coupling, set just behind the skid bracket?



Towing coupling **without** butterfly-shaped plate on underside.
(See below)



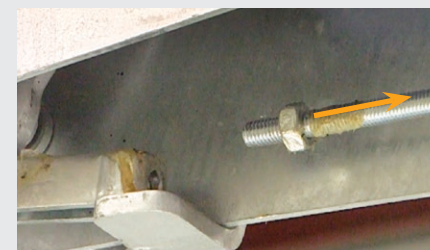
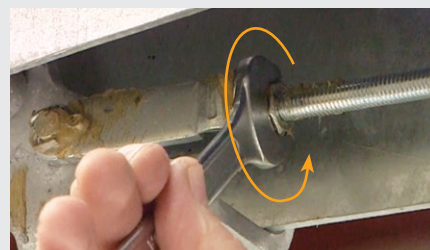
Towing coupling **with** butterfly-shaped plate on underside.
(See following page)

What to do if the coupling **DOES NOT** have a butterfly-shaped plate welded to the underside of the coupling?

Please remove the coupling, as shown below, and return to Groundhog – we will supply a replacement coupling in exchange for the old one **free of charge**.

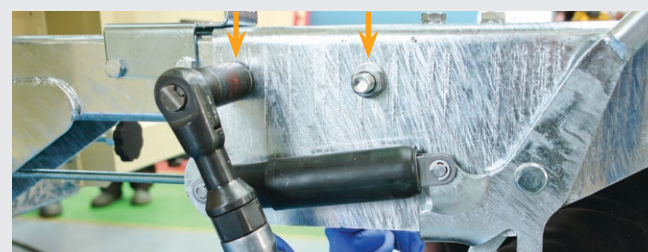
1 Release locking nut attaching brake rod to towing coupling

Release handbrake before releasing the brake rod



2 Remove two M16x135 coupling bolts from towing coupling – the coupling will then fall away

When refitting, tighten bolts to a torque setting of **197NM**

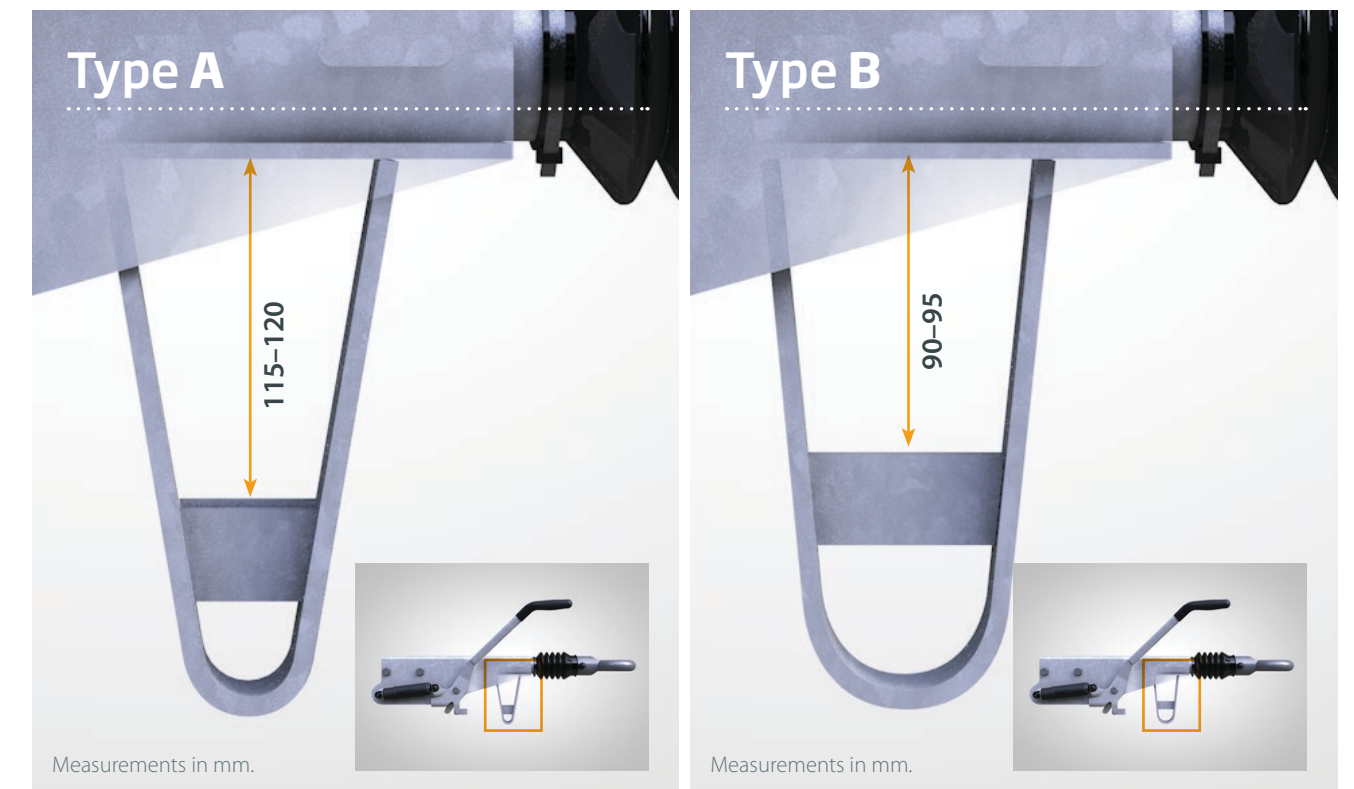


Before you start (continued)...

What to do if the coupling **DOES** have a butterfly-shaped plate welded to the underside of the coupling?

Groundhog have fitted two different types of towing couplings that come with a butterfly-shaped plate welded to the underside of the coupling, behind the skid bracket.

To identify which type of towing coupling is fitted to your Groundhog unit, please see measurements below:



Please inform Groundhog that you have a **TYPE A towing coupling** and we will supply a Handbrake Protection Skid Strengthening Bracket that is finished in a **SILVER** colour.

Please follow the instructions contained in this document to fit the bracket.

This bracket is slightly shorter to fit a towing coupling where the cross bar has been set approximately 92mm down, rather than 115–120mm as on Type A.

Please inform Groundhog that you have a **TYPE B towing coupling** and we will supply a Handbrake Protection Skid Strengthening Bracket that is finished in a **GOLD** colour.

Please follow the instructions contained in this document to fit the bracket.

PLEASE NOTE: The bracket in the following fitting instructions is red to allow it to be easily distinguished from the towing coupling – the supplied bracket will differ in colour (silver for Type A; gold for Type B).

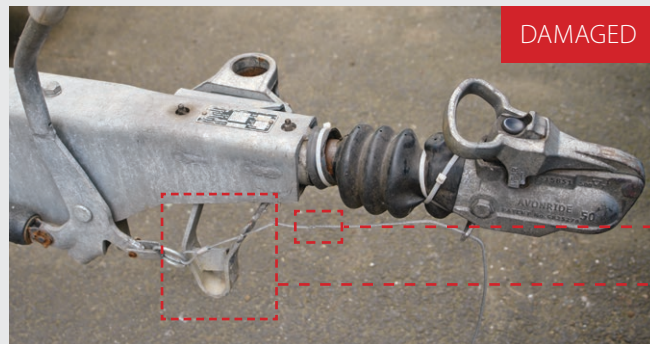
Images are for illustrative purposes only. Measurements are approximate.

Before you start (continued)...

Ensure trailer drawbar is free of any damage.

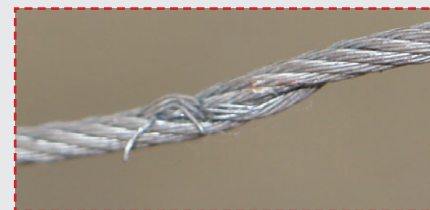


NEW



DAMAGED

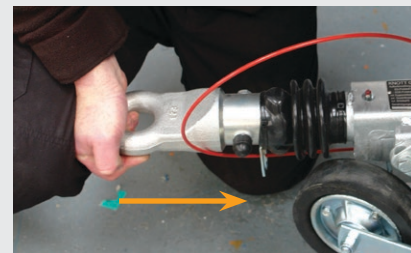
● Frayed breakaway cable



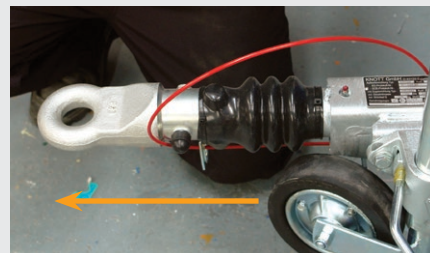
● Bent handbrake protection skid



Ensure damper is in working order.



Push damper in



Damper should release slowly back to original position

Ensure trailer coupling is secure and free of wear.

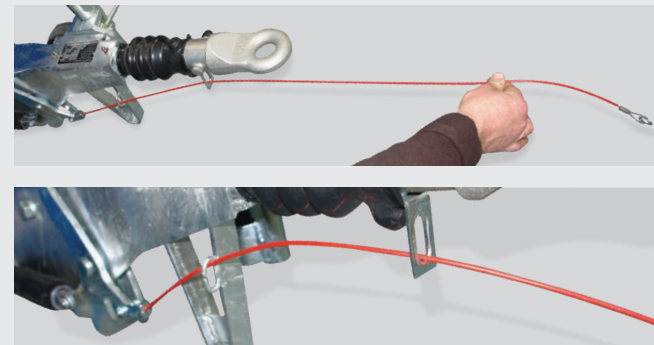


Wear indicator

Check drawbar is not bent or cracked



Ensure breakaway cable is fitted and free of damage.



Before you start (continued)...

Please ensure you have all the parts of the strengthening bracket to hand and all the tools needed to fit.

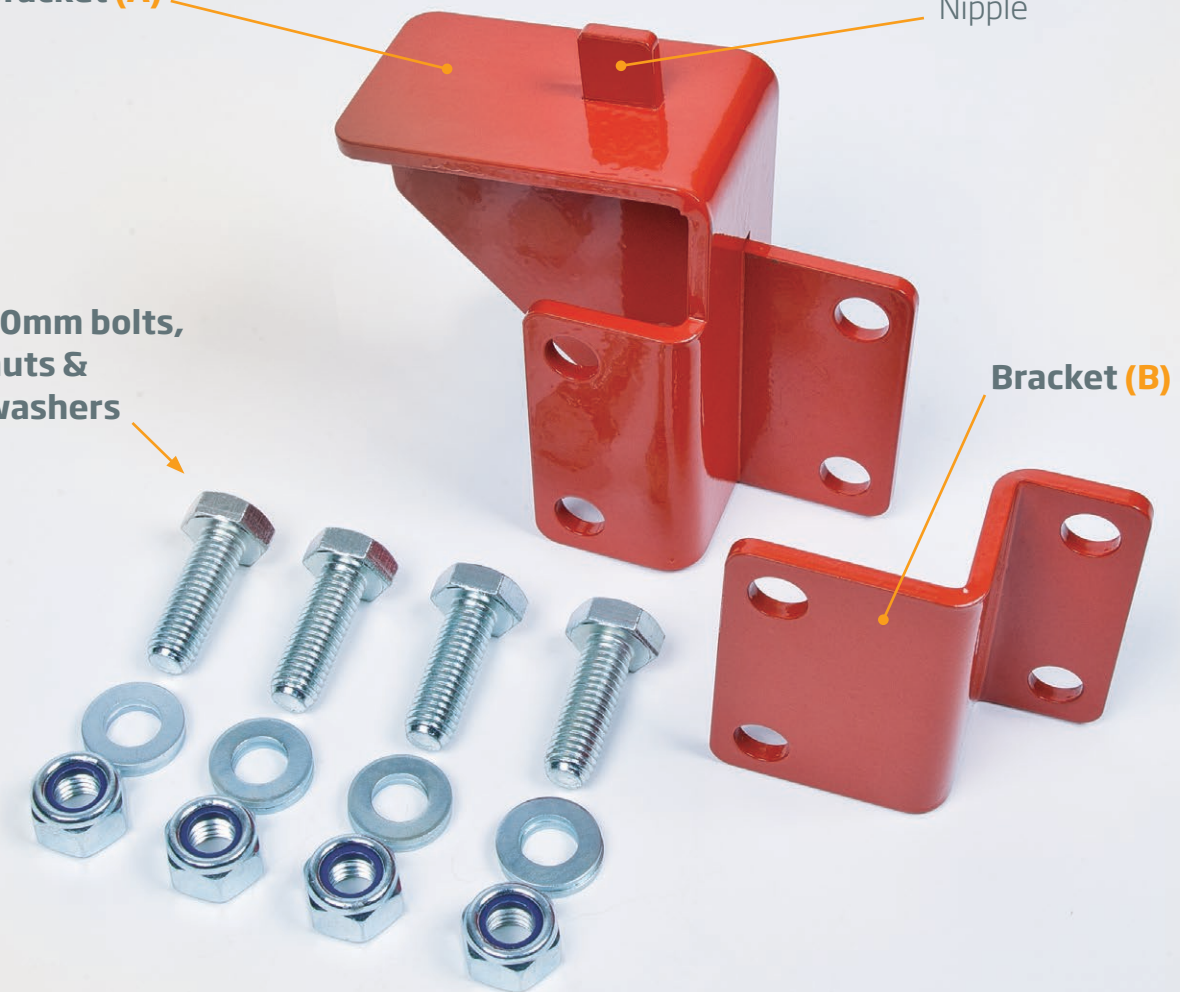
Handbrake protection skid strengthening bracket parts

Bracket (A)

Nipple

10mm bolts,
nuts &
washers

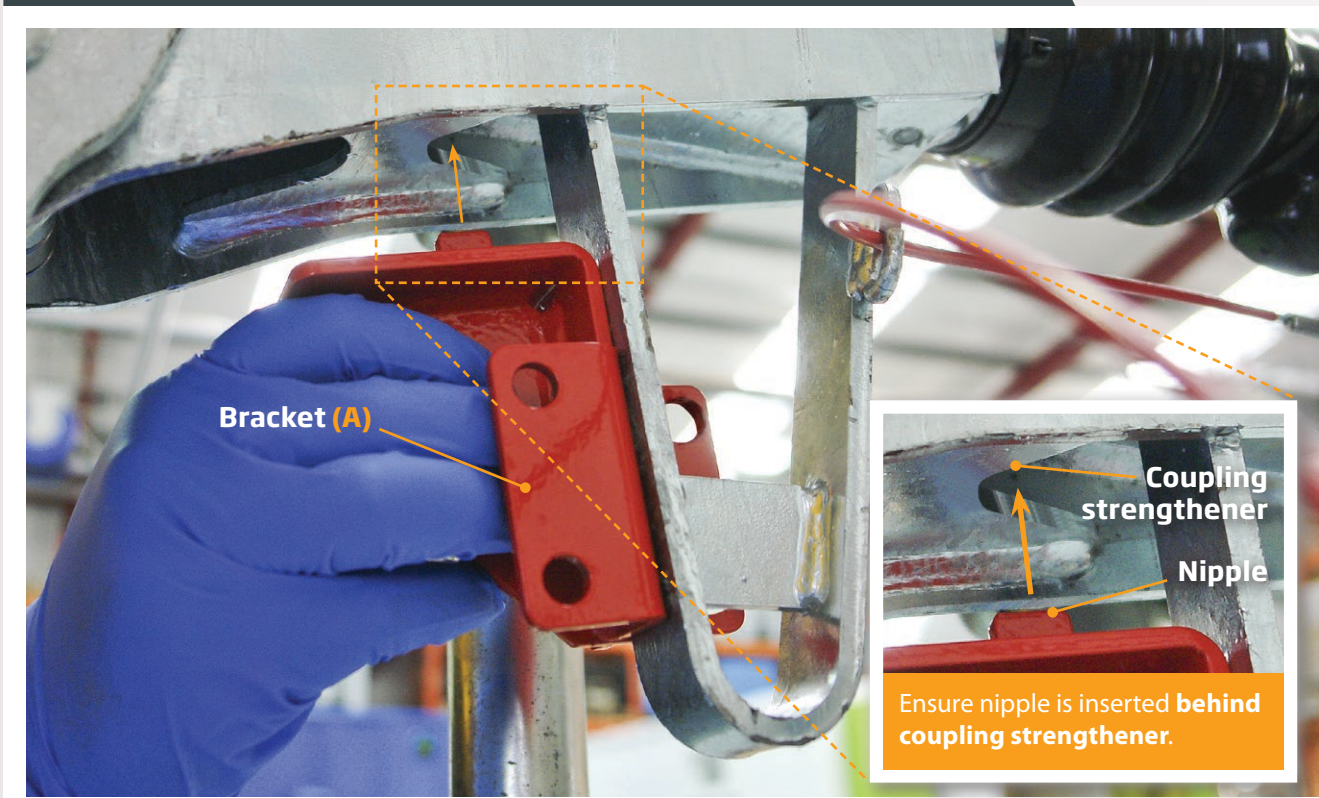
Bracket (B)



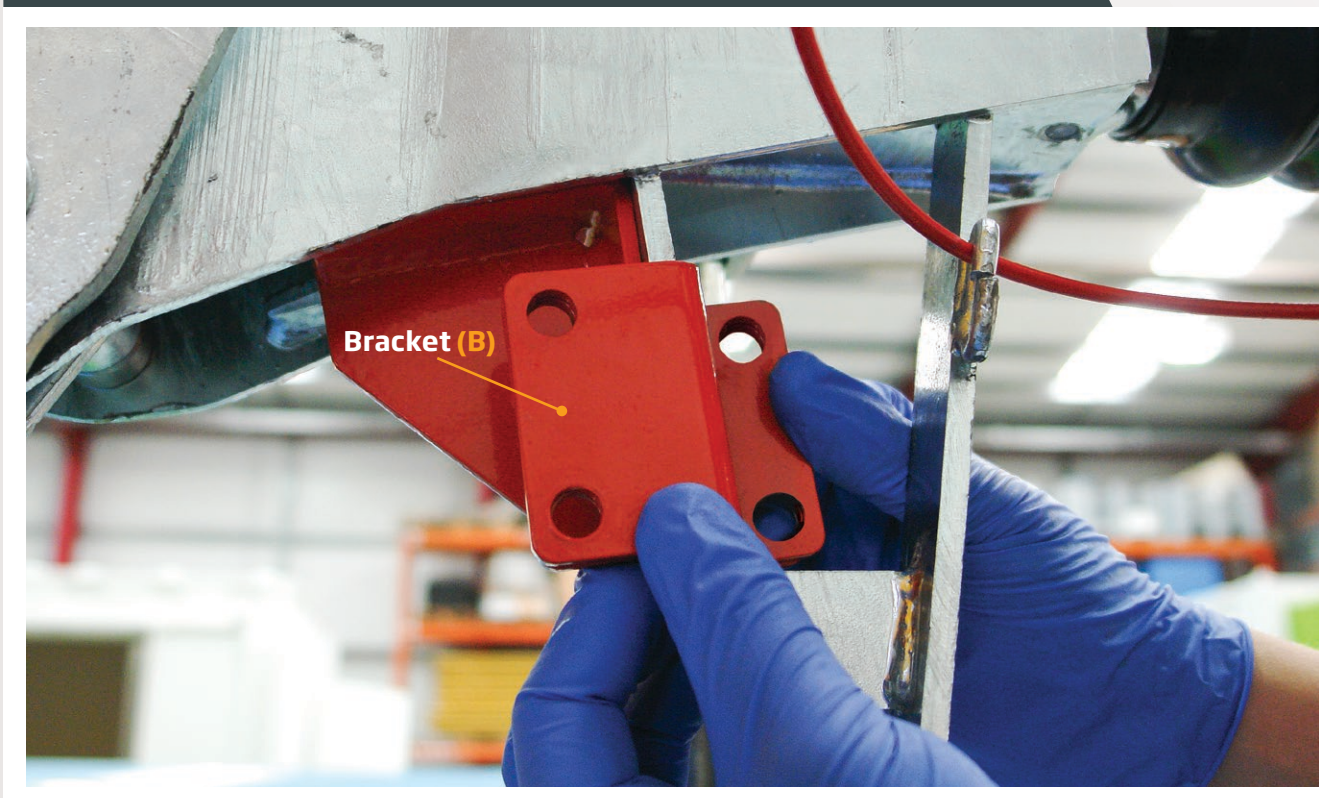
Tools required

- 1 x 17mm spanner
- 1 x 17mm socket

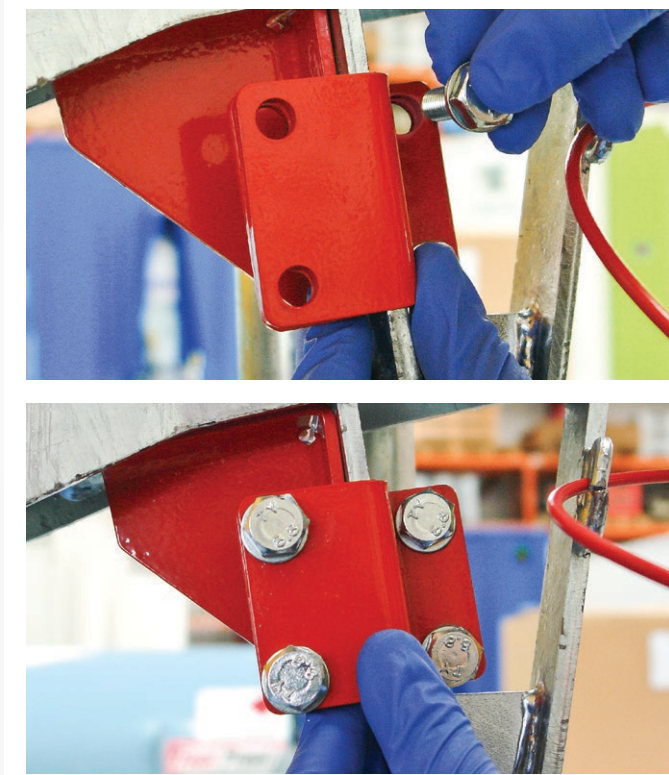
1 Fit strengthening bracket (A) to the **right hand side** of the handbrake protection skid.



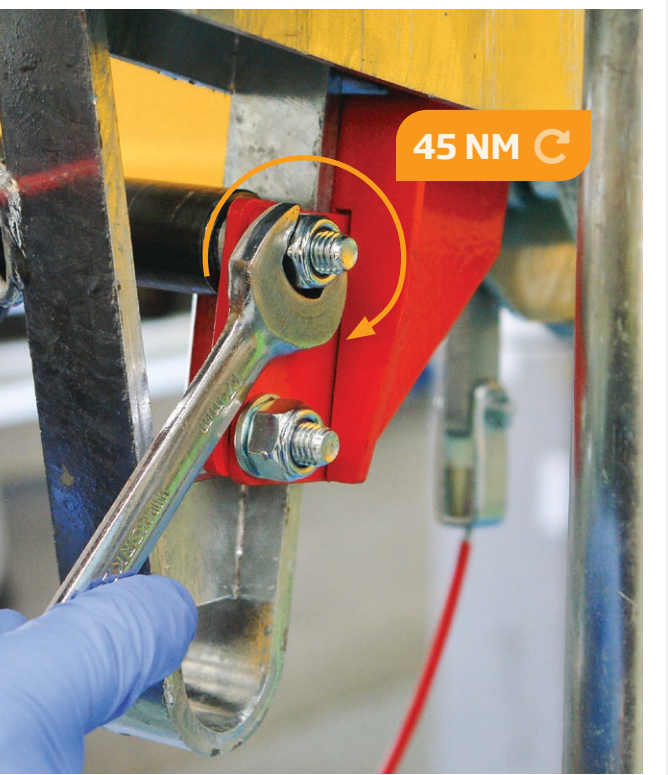
2 Then fit strengthening bracket (B) to the **left hand side** of the handbrake protection skid.



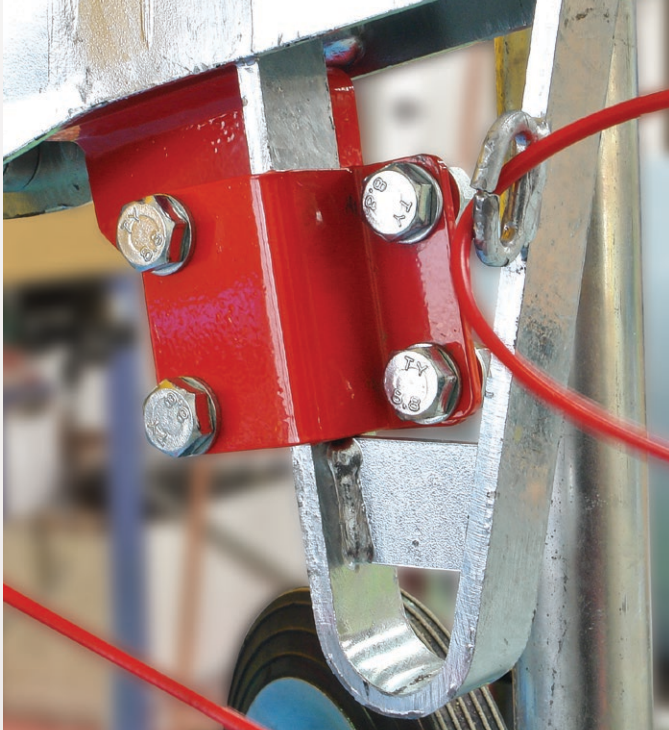
3 Insert 10mm bolts and washers through strengthening bracket holes.



Apply nuts and tighten to **45 NM**.



View from **left hand side**.



View from **right hand side**.





Tel 01639 641166

Email parts@groundhog.co.uk

www.groundhog.co.uk

Version 2.1 | 02/25

Copyright ©2025 Groundhog UK Limited. All rights reserved.

No part of this material may be reproduced in any form
by any means without the express written permission of Groundhog UK Limited.

* Weights and sizes shown may vary slightly. Groundhog reserve the right to change specification without prior notice.